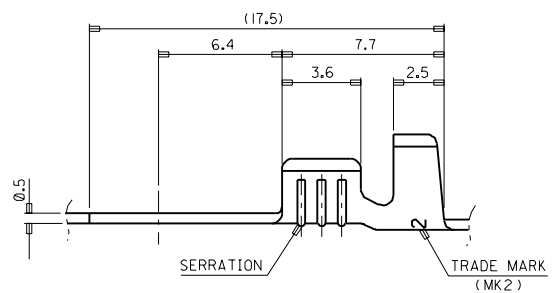
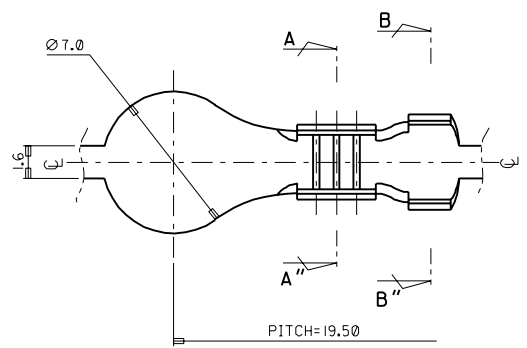
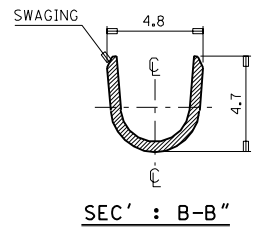
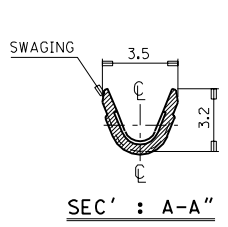


DO NOT SCALE DRAWING
 DIMENSION IN METRIC
 PROJECT NO. SPOT WELD RING TM'L
 SIMILAR ITEM
 EDP NO.
 ENG. NO. SD 35750-21**



- NOTES
- PART NUMBER
- | PART NUMBER | MATERIAL | FINISH | THICKNESS |
|-------------|-----------|-----------------|-----------|
| 35750-2100 | BRASS | NONE | 0.5± |
| 35750-2110 | | POST PLATED TIN | |
| 35750-2160 | | POST PLATED NI | |
| 35750-2101 | STAINLESS | NONE | |
- RECOMMENDED LENGTH OF WIRE STRIP IS 4.9-5.9mm.



ASS'Y PART		QTY/REEL OR PACK	SURFACE AREA	MATERIAL	SEE NOTES	WIRE RANGE	GENERAL TOLERANCES	
DESCRIPTION	ENG. NO.	7,000 Q'TY /REEL	MM ²	DIMENSION CLASSIFICATION		#22-#20	DIM. ±0.30	
				<input checked="" type="checkbox"/> : CRITICAL <input type="checkbox"/> : MINOR		MM ² : 0.3-0.5	ANGLE : ±0.20	
DIE NO.		LAYOUT NO.	DRAWN BY		CHK'D BY	INSULATION RANGE	REVISE ONLY ON CAD SYSTEM	
			J.S. KANG		B.K. CHO	∅2.2-3.5	TITLE: SPOT WELD RING TM'L 1 of 1	
WIRE CRIMP WIDTH		INS. CRIMP WIDTH	APP'D BY		SCALE	ENG. NO. SD 35750-21** REV A		
					6/1			